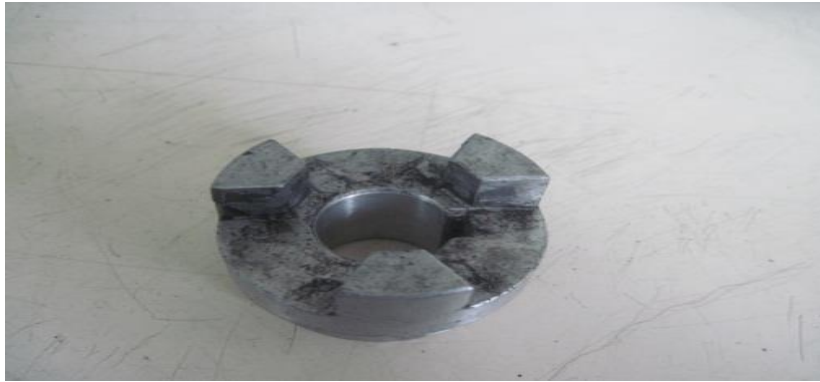


CELL :- CELL NAME:- oil pump MACHINE / STAGE:- CG m/c OPERATION :- Shaft Grinding

KAIZEN THEME :- MTBF increased

WIDELY/DEEPLY:-

PROBLEM / PRESENT STATUS:- Previously use aluminum coupling on hydroulic motor Which is time to time wear out.



BEFORE

IDEA :- Coupling material change

COUNTERMEASURE:- Now we use CI L-75 Coupling.



AFTER

WHY WHY ANALYSIS :-

WHY :- Time to time wear out

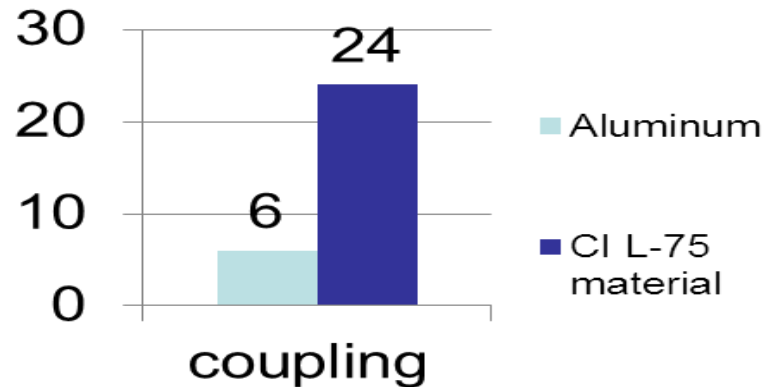
ANS 2:- aluminium coupling provide &

material not as per requirment

ANS 2:- Manufacturer not consider

ROOT CAUSE:- Coupling material not as per requirment

RESULT:- MTBF Increase



BENCHMARK	6 month
TARGET	2 year
KAIZEN START	15.08.15
KAIZEN FINISH	15.08.15

TEAM MEMBERS :- P.sharma ,Anish

sachin

BENEFITS :- 1) MTBF increased
2) Cost Saving

KAIZEN SUSTENANCE

WHAT TO DO :- Check

HOW TO DO :- Visuully

FREQUENCY :- 6 month

COST INCURRED FOR MAKING KAIZEN

MATERIAL COST RS.	LABOUR COST RS.	TOTAL COST RS.

SCOPE & PLAN FOR HORIZONTAL DEPLOYMENT

SR. NO.	CELL	TARGET	RESPONSIBILITY	STATUS

REGISTRATION NO&DATE:

REGISTERED BY :-

MANAGER'S SIGN :-